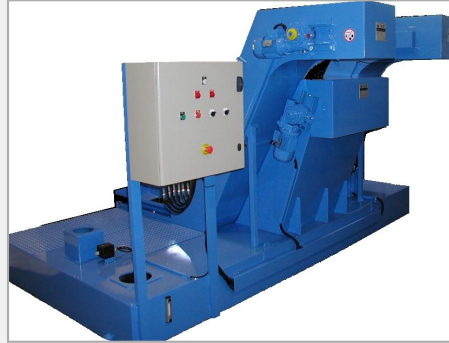


Conveyors with filters



A single unit composed by one or several conveyors and a self-cleaning drum filter without disposable filtering fabric. Operation- costs saving and coolant life improvement. Ideal for machining centers, for all types of metal chips and coolants. Filtration degree down to 50 microns., flow following request.

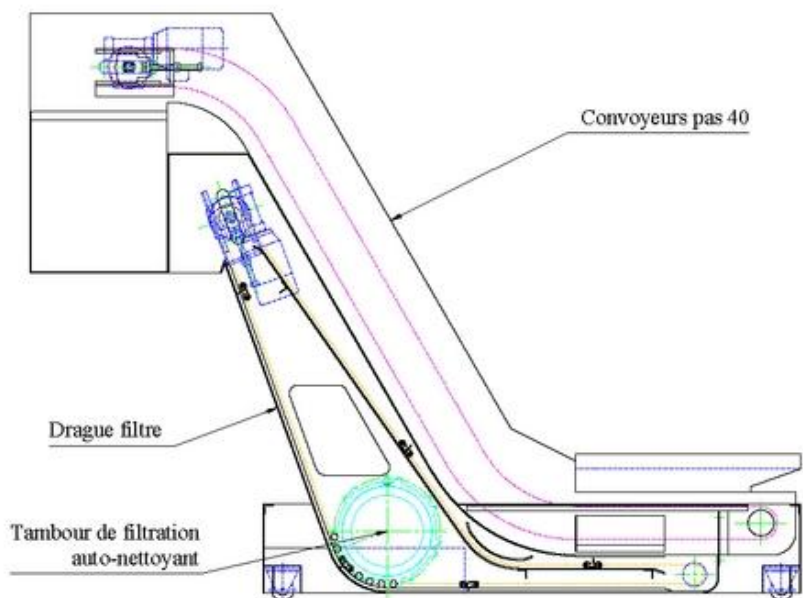
OPERATING

Chips and the machining fluid is discharged on the metallic belt conveyor. The chips are removed in a dumpster. The liquid is recovered between the two strands of the belt in the filter.

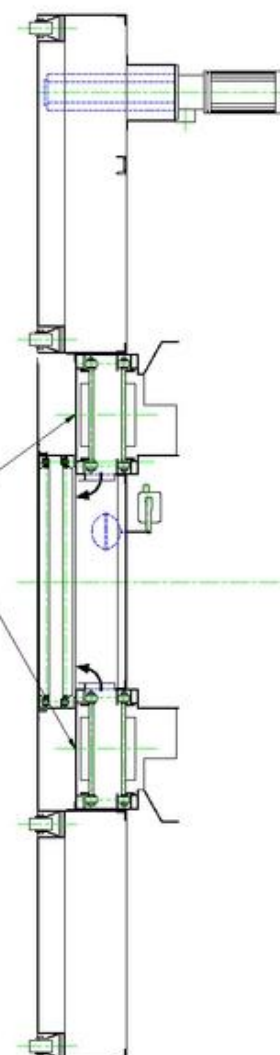
The remaining particles decant at the bottom and are removed by the drag. Passing through the filter drum, the liquid is purified and gets in the storage tank. A spray bar clean the drum filter against the current, which rotates continuously or intermittently.



coupe B-B

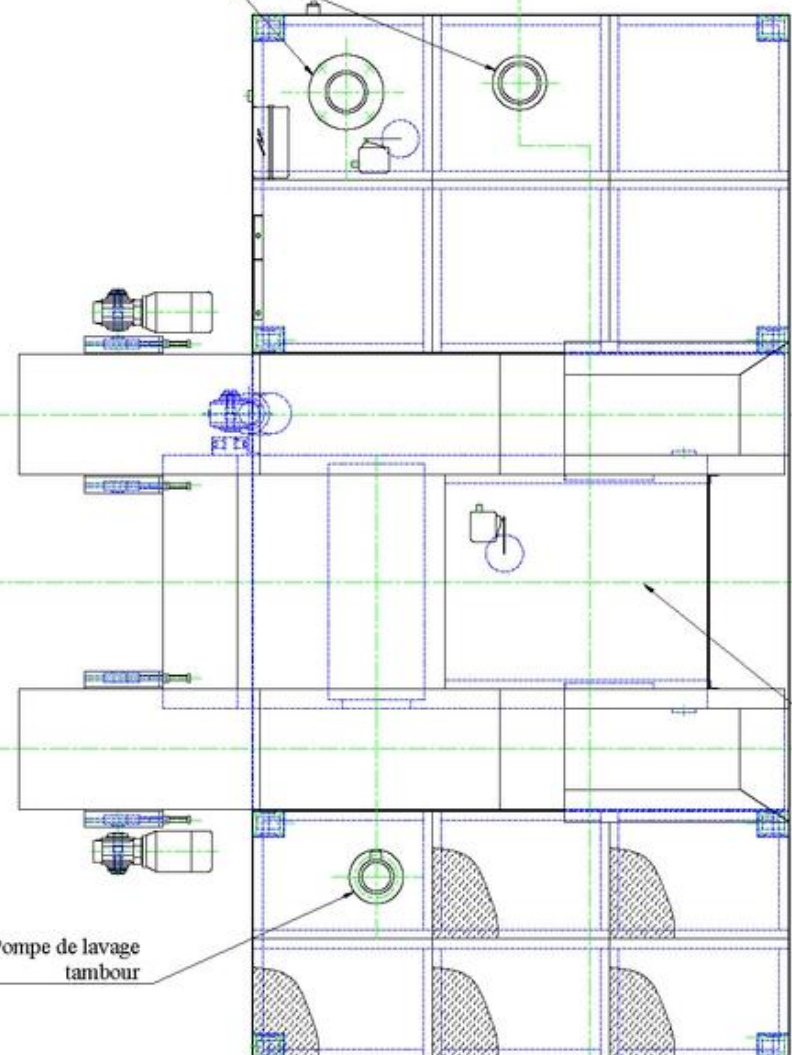


coupe A-A



Pompes de relevage

A



Convoyeurs pas 40

Drague filtre

B

B

A