

## Hydrostatic filter



### USE

Individual or centralized filtration for machine tools.

- Liquid rectification and machining: emulsions, synthetic solutions, micro-emulsions.
- Fluids rolling and wiredrawing.
- Oils of lapping.
- Any other aqueous liquid.

### AVANTAGES

- Improving the surface state of parts.
- Increased life of liquids.
- Reduced tool wear.
- Slower Fouling millstones.
- Consistent quality of Filtration.
- Reducing maintenance costs.
- Reduced Footprint compared to a flat filter

### OPERATING

The filter media is inserted between two side wheels and a metallic endless belt forming a semicircle filtration zone. The liquid to be filtered enters the filter by the side through a hollow shaft and a diffuser intended to promote a uniform distribution of the contaminant.

Suspended particles gradually deposit on the paper in the form of a cake thus helping to improve the filtration.

The gradual clogging of media leads to a reduction of filtration rate generating an increased level in the drum. Depending on the type of filter, the level can reach up to 500 mm, creating a hydrostatic pressure on the filter paper.

This pressure allows the use and optimal filtration of the paper.

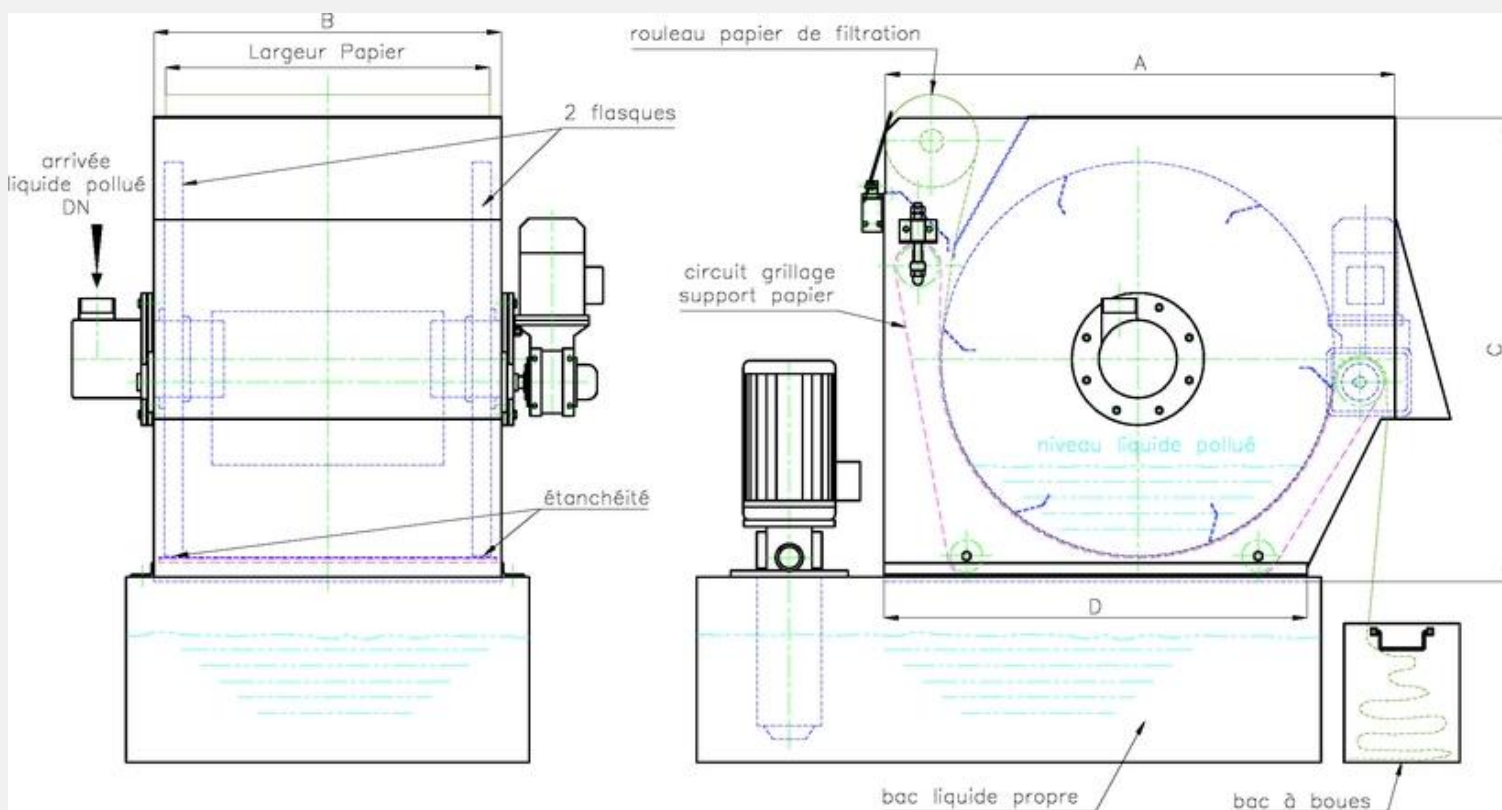
When the maximum level is reached in the drum, the gear motor starts to renew the paper and remove the muds in a dumpster.

When the level drops in the filter area, the motor stops after the pulse switch low. Scrapers are mounted between the wheels to facilitate the evacuation of the mud and chips.

An end of paper roll controller indicates that the roll must be changed.

Depending on the flow and finesse of filtration desired, it is possible to choose different types of papers.

## TECHNICAL DATA



Type	Débit émulsion en L/min	Débit huile 20 mm <sup>2</sup> /s	Surface filtrante en m <sup>2</sup>	A	B	C	D	DN	Largeur du papier en mm	Poids à vide approximatif en Kg
<b>FH120</b>	120	60	0,32	750	550	700	640	32	500	220
<b>FH250</b>	250	125	0,44	750	750	700	640	50	700	250
<b>FH350</b>	350	175	0,73	1100	750	1000	910	65	700	350
<b>FH600</b>	600	300	1,1	1100	1050	1000	910	80	1000	450
<b>FH1000</b>	1000	500	1,6	1100	1550	1000	910	100	1500	550
<b>FH1500</b>	1500	750	2,1	1100	2050	1000	910	150	2000	650